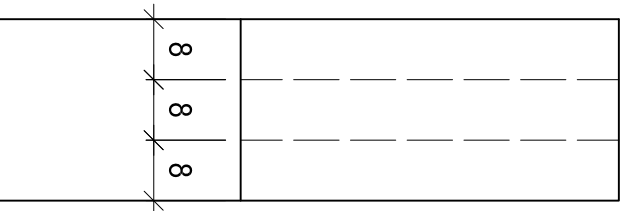
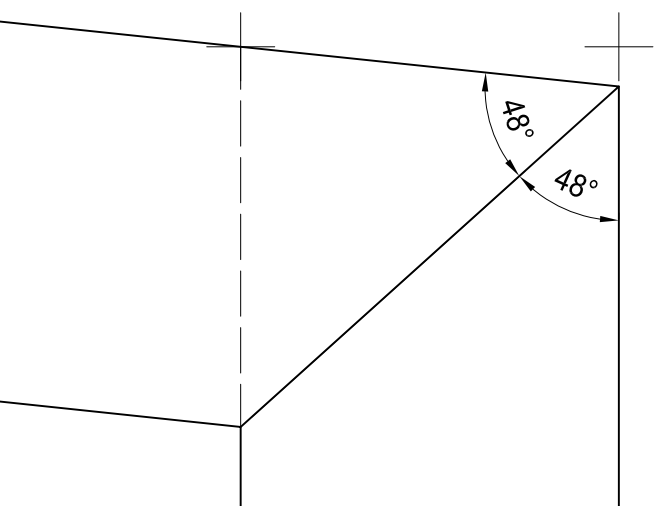


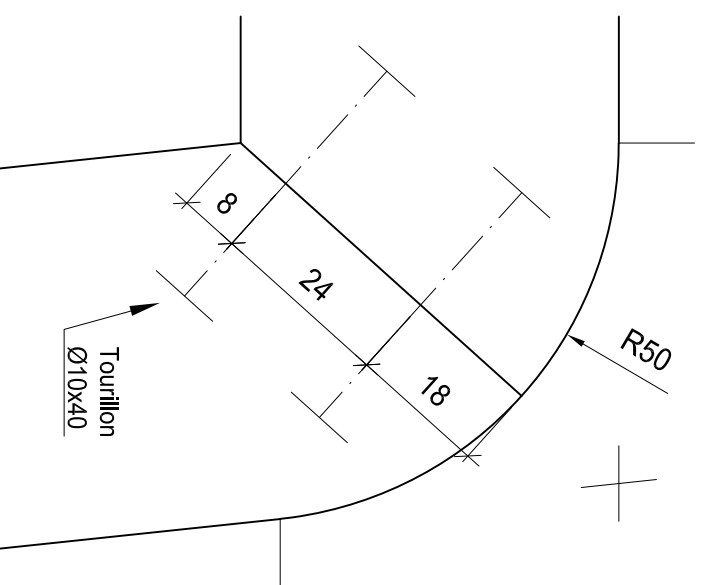
C - C



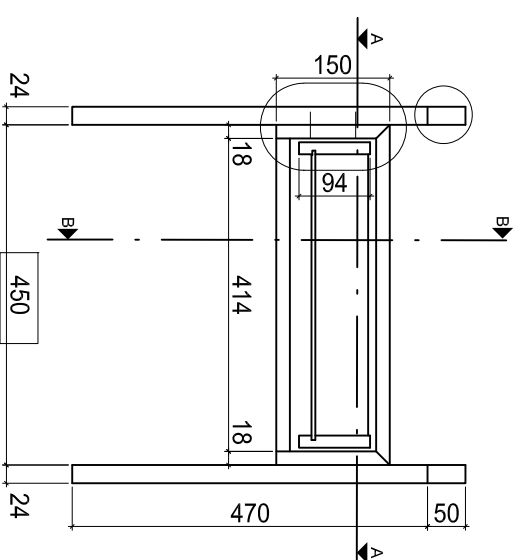
B - B



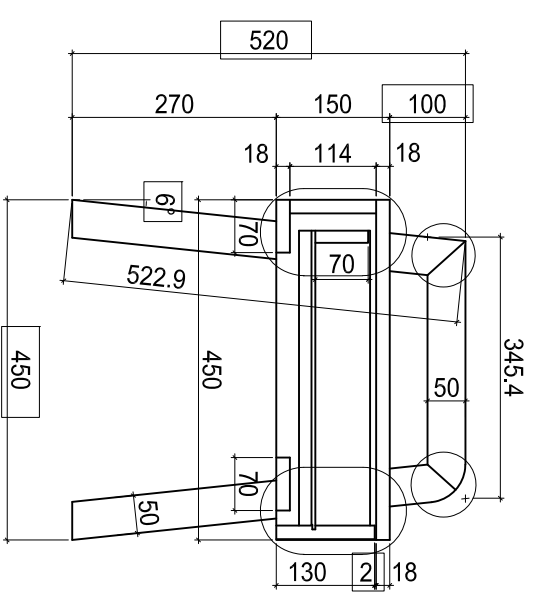
B - B



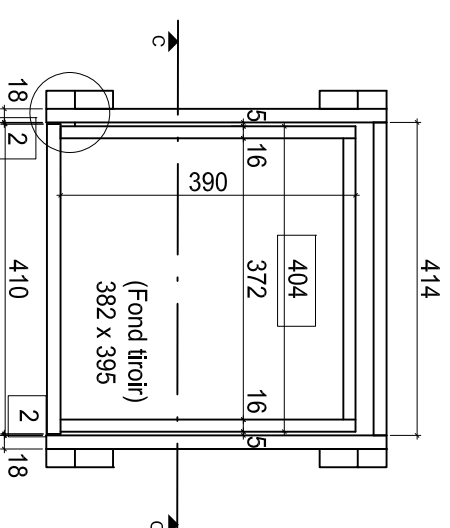
C - C



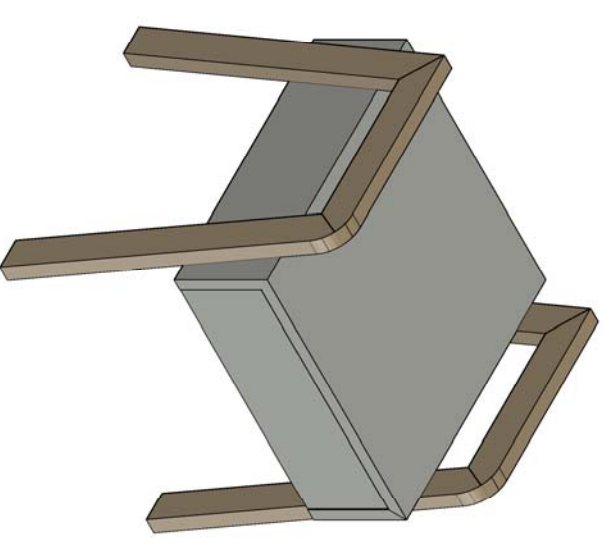
B - B



A - A



Liste de matériaux	Mat.	Pce	Long.	Larg.	Ep.
Dessus	Mul	1	450	450	18
Côtés	Mul	2	450	150	18
Face	Mul	1	410	130	18
Dos	Mul	1	414	114	18
Traverse	Mul	2	414	70	18
Fond tiroir	Bc	1	382	395	5
Piètement montants	b.dur	4	522.9	50	24
Piètement traverses	b.dur	2	345.4	50	24
Tiroir côtés	b.dur	2	390	94	16
Tiroir arrière	b.dur	1	404	70	16
Tourillon		6	Ø8x30		
Tourillon		4	Ø10x40		
Vis		8	4x35 fraisé		
Vis		3	3.5x16 fraisé		
Lamello 10		6			
Lamello 20		8			



FR
CE
EM

Meuble tiroir

Sélection cantonale
WS 2018/19

nos métiers,
avec passion

Fédération Romande des Entreprises de Charpenterie,
Ebénisterie et Menuiserie

Exercice N°: 2018.01 1

Echelle: 1:10

Taille plan: 290 x 420

Date: 05.05.2017

Indication: ec